



## This Issue:

### Page 1

- Telling Stories in the Landcare Office

### Page 2

- Dates for your Diary
- Community Action Grants
- Funding for Farm Plans

### Page 3

- Weeping Paperbark Project at Tucabia
- New Regional Landcare Facilitator
- RASF Funding

### Page 4

- Funding Announced—Whiteman Creek Project
- Hairy Cats Claw Creeper
- Soils Workshop

### Page 5

- Asian House Gecko

### Page 6

- Beware—Myrtle Rust

### Page 7

- NSW Boaters & Fishers—your ideas needed
- Northern Rivers Landcare Awards
- Reminder to Groups

### Page 8

- Brooms Head Coastal Environment Day
- NSW Coastal Volunteers Forum

### Page 9

- Biological Farming Course—Grafton
- CIA—TOAD BUST



## Telling Stories in the Landcare Office

On October 28th & 29th 2010, Clarence Landcare Inc. hosted 'PlaceStories' computer program training, funded by the Northern Rivers Catchment Management Authority (NRCMA) and presented by Feral Arts, hosts of Digital Landcare\*.

Our Landcare office was transformed into a computer lab with 15 laptop computers connected to the power points of our 100 year old building....I was very nervous!!

We had 14 people from the Clarence and Coffs Harbour areas take part including 4 of our own Clarence Landcarer's, 2 people from Clarence Valley Council, 3 from NRCMA, 3 of us from Clarence Landcare Inc. and also a staff member each from Yarrawarra Aboriginal Corporation and Coffs Harbour Regional Landcare. I must admit it was a bit of a squeeze but everyone had fun.

PlaceStories is an audio and visual (computer) presentation program which brings together photos, background music and a voice over to tell a story.

The stories usually are about 3 minutes and can be presented straight from your computer, projected onto a screen, straight from the web or embedded into your own website. The stories can be saved to a disk and used in another computer.



We received some great feedback from participants about the training including.

*"I now have a lot more PC understanding and had a pleasant couple of days among friends and tutor" and ....*

***"I managed to successfully complete a PlaceStories presentation and gained a lot more knowledge about social networks and links between them"***

This message from Dee from Yarrawarra Aboriginal Corporation was emailed a week after the training

*"On Monday 1st November 2010, Yarrawarra staff and*

*Garby Elders went to the Solitary Islands Marine Park (SIMP) office at the Jetty in Coffs Harbour and presented our PlaceStory "Hogan's Hole and Washaway Beach" to the 3 Director Generals of Marine Parks, National Parks and Primary Industries (fisheries), as part of our submission to the draft SIMP zoning plans. I bet not many other PlaceStories trainees have achieved that within 3 days of completing the training! - Yarra yarraang—Dee Murphy*

What great news, in fact 4 other participants have also presented their Stories in various forums, which means one month after the training PlaceStories presentations have been shown to a combined audience of 108 Natural Resource Managers. Please click on this link <http://ps3beta.com/project/7749> to view some postcards and stories from the workshop.

By Debbie Repschlager

\*Digital Landcare is a network for Landcarers to share their natural resource management (NRM) experiences through digital stories and other media— check it out at <http://ps3beta.com/community/digitallandcare>



## DATES FOR YOUR DIARY

### December 2010

**23th Dec**— Office Closes for xmas

**January 2011**— office reopens 10th Jan

**14th Jan**— Royal Agricultural Society Foundation Grants (for under 35's) applications close. ( pg 3)

### February 2011

**16th Feb**—Boaters & Fishers Survey Closes

**21st Feb**— Northern Rivers Landcare Awards nominations close

**21st Feb**— Biological Farming Course—Grafton commences

### March 2011

**27th Mar**— NSW Coastal Volunteers Forum

### April 2011

**6—9th April** – **Birds Australia Campout**, For registration, bird lists and additional information log onto the Canberra Ornithologists Group website (<http://canberrabirds.org.au/>) Follow the link to 'BA Campout' .



CARING  
FOR  
OUR  
COUNTRY

## **The 2010 /2011 Caring for our Country**

Community Action Grants (\$5,000 to \$20,000)

### Community Action Grants 2010-11

#### Successful projects

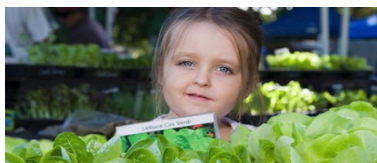
The Australian Government has approved \$7.96 million in Community Action Grant funding to help community groups take action to sustainably manage and protect our environment and natural resources.

The funding includes:

- More than \$4.2 million for 233 Landcare projects
- More than \$3.7 million for 220 non-Landcare projects to conserve, protect and enhance our environment.

Community Action Grants supports local community groups working across the country in all geographic areas on private and public lands to enhance our environment. <http://www.nrm.gov.au/cag/>

**Congratulations to:** Clarence Valley Council & Yamba Landcare Group for their Successful application for funds for the development of the Lovers Point Beach Access Improvement Strategy - Regeneration of the area and provide restoration of the vegetation communities.



## ***Integrated Land Plans*** *By experts from Industry and Investment NSW*

- Find out ways to head off problems before they become expensive and complicated.
- Take the opportunity to integrate your management jig saw to reduce costs and improve outcomes.
- Learn how to keep your options open and generate credits in a future focused on carbon.
- Make a plan that will keep you in the game for the long haul instead of just hanging on season to season.

The Northern Rivers Foodlinks project is sponsoring on farm plans that will look at weed control, erosion, soil carbon, pest control, seasonal variability, climate change and more. The consultancy fee for this service is estimated at \$1880 but for twenty sponsored landowners the fee will be only \$100. The first round of Applications are due at the end of Feb 2011

Visit [www.northernriversfoodlinks.com.au](http://www.northernriversfoodlinks.com.au) or call Greg Reid on 66722770 or the Landcare Office for an application form.



## Weeping Paperbark Project at Tucabia



Peter Turland (Yuraygir Landcare) standing next to one of the *Melaleuca irbyana* trees at the Tucabia Reserve

The Tucabia Reserve has received much attention over the past year with Yuraygir Landcare member Peter Turland putting in many hours of hard work with assistance from Clarence Valley Council to protect the endangered Weeping Paperbark, *Melaleuca irbyana*.

Peter has propagated, planted and maintained Weeping Paperbark and other native species at the reserve in Tucabia.

This has been assisted through a small project supported by Clarence Valley Council and the Northern Rivers CMA.

Along with protecting and maintaining the reserve, the project aims to raise awareness in the local community about the existence of the Weeping Paperbark in the Tucabia area and the possibility of its presence on private properties too.

The Tucabia School has shown interest in the project and an interpretive sign will be soon be on display to provide information about the Weeping Paperbark.

### Will your idea transform your community?

#### The \$25,000 Question can help make it happen.

The Royal Agricultural Society Foundation is offering young people the opportunity to secure up to \$25,000 to deliver a new and innovative rural community project.

We will consider inspired projects as diverse as playground equipment for your local kindergarten or a tree-planting day to combat salinity.

To enter simply tell us how you would use \$25,000 to realise a project to benefit your local community. Eligible entrants must be 35 or under on 1 May 2011 and projects must be located in rural or regional NSW.

**Applications close 14 January 2011 – apply online at [www.rasf.org.au](http://www.rasf.org.au)**

For further information please contact the Royal Agricultural Society Foundation

**T: 02 9704 1234 E: [foundation@rasf.org.au](mailto:foundation@rasf.org.au)**



## Regional Landcare Facilitator - North Coast Regional Landcare Network.

Brian Dodd, chair of the North Coast Regional Landcare Network (NCRLN,) welcomes Jodie Gager to the position of NCRLN Facilitator. Jodie's appointment was just in time for her to attend the Annual Regional Landcare workshop at Nymboida in October 2010.

It was great to meet so many of the Landcare team and the Northern Rivers Catchment Management Authority (NRCMA). The interaction between the CMA Board and management staff and the Landcare team was very impressive.



Left to right: North Coast Regional Landcare Network Secretary Daintry Gerrand, Regional Landcare Facilitator (RLF) Jodie Gager, President Brian Dodd, Vice President Colin Matthews, and at the state wide (RLF) Induction in Sydney.

I grew up on a beef farm in Victoria and developed a passion for food production and the environment. I studied Natural Resources Management and have worked with Landcare for 14 years and greatly admire the innovation and commitment of our farmers and community.

The NCRLN Regional Landcare Facilitator role has a focus on developing the skills of the Landcare community and professionals to deliver programs targeting sustainable production in the primary industry sector, together with the engagement and participation of community groups in the natural resources management programs.

Capturing and communicating the achievements and future goals of Landcarers in the Network region is a priority for this role. I will be striving to put forward the ability and aspirations of the groups in the Network to ensure they are valued and represented in decision making and investment around natural resource management initiatives now and into the future.

I am looking forward to working with North Coast Landcare community into the future. I am available Monday, Tuesday, Thursday and Fridays and can be contacted on 0438 744 598 or email me at [rjf\\_NCRLandcare@hotmail.com](mailto:rjf_NCRLandcare@hotmail.com)

By Jodie Gager



## Funding Update

### Good News for the Whiteman Creek Project

Announcements were made in September for the NRCMA Incentives Program 2010/2011. In addition to assisting 12 landholders with submissions Clarence Landcare Inc. applied for two larger ongoing projects, Kangaroo Creek River Reach Year 4 and Whiteman Creek River Reach Year 2, the total of these two projects combined involved over 30 properties.

From the list of successful projects advertised by the NRCMA – five landholders in the mid– lower Clarence were successful. Clarence Landcare was unsuccessful with gaining funding for Kangaroo Creek River Reach Year 4, this was disappointing but we will continue to seek support for this project when funding becomes available.

Whiteman Creek Year 2 was successfully funded with a reduced budget of \$30,000 which means a lot less work will be done than in year 1. In addition to the NRCMA funding opportunities, Clarence Landcare Inc. has applied to the NSW Department of Industry and Investment - Fish Habitat Grant for the Whiteman Creek Project.

By Susan Moore

**News Flash.** Sue has just been notified that her application for the Fish Habitat grant has been successful, however with a reduced budget of \$20,000 for Whiteman Creek. Well done Sue and all those Whiteman Creek Project landholders.

## Regenerating Our Soils Workshop

The Regenerating Our Soils Workshop, hosted by SoilCare Inc. was held at Trenayr TAFE College in Grafton on the 8<sup>th</sup> and 9<sup>th</sup> November. Around



25 people attended the course with international y renowned Biological farming consultant and teacher Dr Paul Hepperly.

Dr Paul Hepperly and Bonnie Walker from SoilCare Inc. at the 2 day course.

## AS IF CATS CLAW CREEPER ISN'T BAD ENOUGH !!!

### Look out for HAIRY CATS CLAW

Cat's Claw Creeper is a very widespread and common invasive vine in eastern Australia. However another form of Cat's Claw Creeper has become increasingly common amongst naturalised populations of this species in south-eastern Queensland. This plant is known as "Hairy Cat's Claw Creeper" or "Bat's Claw Creeper". While this plant has several differences, it is currently regarded to be a form of *Macfadyena unguis-cati*.

**Distribution** Hairy Cat's Claw Creeper has been detected throughout South East Queensland, including several Brisbane suburbs (e.g. Mount Coot-tha, Corinda, Seventeen Mile Rocks and Goodna) and on the Gold Coast.

### Why is it an Emerging Threat?

Hairy Cat's Claw Creeper causes similar problems to the typical form of Cat's Claw Creeper. Its aggressive growth can kill trees in the forest canopy and smother vegetation on the forest floor. Its underground tubers make it very difficult to control or eradicate from infested areas. However it has shown a propensity to invade different vegetation types and may become a serious weed of non-riparian vegetation.

HAIRY CATS CLAW

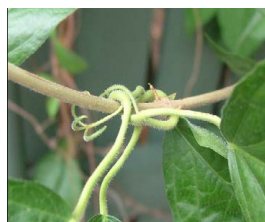


Leaves with larger and broader leaflets, often with toothed margins.

CATS CLAW



Leaves with smaller and narrower leaflets, usually with wavy margins.



Stems, leaf stalks, leaf undersides and claw-like tendrils are covered in fine hairs



All parts of plant are generally hairless.

**weed watch**

This is an excerpt from the weed watch flyer for more info go to

<http://www.technigro.com.au/documents/WW%20Hairy%20cats%20claw%20creeper.pdf>



## Asian House Gecko *Hemidactylus frenatus*

### Asian house geckos are a non-native invasive species

The CIA's Team Gecko has been investigating the occurrence of the Asian House Gecko (AHG) in the Clarence Valley and has come across some interesting facts and manual capture methods. The AHG has been reported in the Grafton urban area and at Wooloweyah and Angourie....have you seen or heard one in your area?

If you think you have, then send an email to the team at [geckos@cvcia.org.au](mailto:geckos@cvcia.org.au). Information received will be recorded by one of the team gecko volunteers. We do have many native geckos and some can make small noises. Go to [www.cvcia.org.au](http://www.cvcia.org.au) website to read more about how to distinguish the AHG from our native geckos. Sightings can also be recorded at <http://www.climatewatch.org.au/species/reptiles/asian-house-gecko#record>

According to the Climate Watch website "It is widely regarded as the most invasive reptile species in the world and has replaced native gecko species in Darwin and Townsville. It now has the widest range of any lizard in the world!"

Source <http://www.climatewatch.org.au/species/reptiles/asian-house-gecko>

Found in coastal towns and cities of northern Australia, from Coffs Harbour in New South Wales to far north Queensland and into the Northern Territory. The Asian House Gecko is an invasive species that may be spreading further south into Australia and this may well be aided by climate change increasing temperatures.

Mainly heard or seen in urban areas on buildings including homes, shops and factories, especially around the outside walls and windows of houses where insects are attracted to lights. It is rarely seen in the wild. Perhaps this could mean that they don't survive well, away from human habitats.



Photo: Asian House Gecko ( source [www.climatewatch.org.au](http://www.climatewatch.org.au))

**Appearance:** **Colour:** a fawn to grey body with some mottling. It can change its colour from paler at night to darker during the day. Its tail can have a slightly flattened appearance and has small spines arranged in bands. It has bulging eyes with no eyelids. **Size:** about 10 cm including its tail (body about 6 cm).

**Behaviour:** **Call:** a distinctive clicking: "chuck, chuck, chuck..." **Diet:** any insect small enough for it to capture and swallow, including moths and wasps. **Movement:** largely nocturnal, it comes out at night to feed on insects attracted to lights. It is an agile lizard, and is often seen running along the walls of buildings. **Breeding:** all year round in tropical regions and during summer in the cooler, southern regions of its range. After mating, the female lays two, round, hard-shelled eggs that are resistant to moisture loss. They are either glued to a firm sheltered surface or deposited in a crack or wall cavity.

Asian House Geckos could present problems by:

- displacing native geckos in Clarence Valley;
- displacing various species through predation and using food resources;
- spreading disease.

# Myrtle rust

## *Uredo rangelii*

### Identification Sheet

The fungus *Uredo rangelii* (Myrtle rust) has been detected on a commercial property on the New South Wales central coast. Myrtle rust is considered to be part of a group of rust fungi collectively known as eucalyptus/guava rust. Early identification of this rust is vital to eradication efforts.

**Host species:** In Australia, Myrtle rust has recently been detected on *Agonis* (willow myrtle), *Syncarpia* (turpentine) and *Callistemon* (bottlebrush) species. Internationally, there are unconfirmed reports of infection on some *Eucalyptus* species. It has also been confirmed on *Myrtus*, *Syzygium* and *Heteropyxis* species overseas.

**Spread:** Rusts are highly transportable. The most common dispersal mechanism is via wind but they may also attract bees who work the spores on leaves. The spores can also be spread via contaminated clothing, infected plant material and insect movement.

**Identification:** Myrtle rust produces lesions on young, actively growing leaves and shoots, as well as on fruits and sepals. Leaves may become buckled or twisted as a result of infection. On turpentine and callistemon rust lesions are purple in colour, with masses of bright yellow or orange-yellow spores.

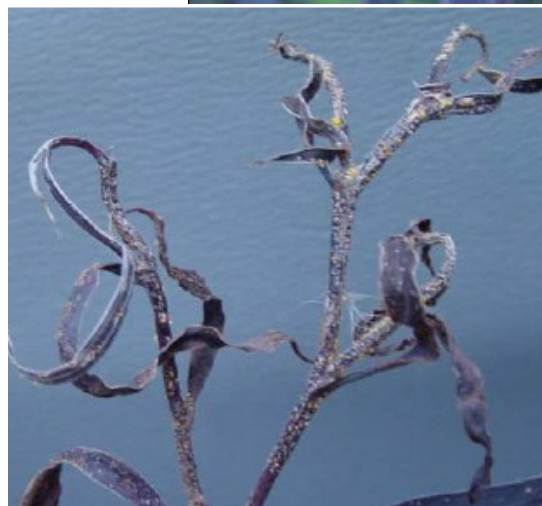
Occasionally, they may have dark brown spores. Severe rust disease in young trees may kill shoot tips, causing loss of leaders and a bushy habit.

**Any rust on Myrtaceae should be reported.**

**Reporting:** To report suspect cases of Myrtle rust please call the

**Exotic Plant Pest Hotline: 1800 084 881**

*Uredo rangelii* on *Agonis flexuosa*  
(Willow Myrtle)



*Uredo rangelii* on Turpentine





NSW Boaters and Fishers –

**WE NEED YOUR IDEAS!!!**

You may go water skiing, sailing, or cruising offshore. You might throw a line from your tinnie, fish from the shore or gamefish the open ocean. Whatever your involvement with boating and fishing in freshwater or saltwater we are seeking your opinions and ideas about a new education project.

We are asking you to complete a brief (approx. 7-min) survey so you can have your say. Go to or Click on the Link below to fill out the survey.

The valuable information collected will be used to develop an environmental education strategy to help maintain the quality of your favourite recreational sport for you, your children and your grandchildren.

You could even win a voucher for your favourite boating or fishing tackle store!

This project is being conducted jointly by all the NSW Coastal Catchment Management Authorities and the following project partners:

Boat Owners Association of NSW

Recreational Fishing Alliance of NSW

Boating Industry Association of NSW

NSW Maritime

Industry and Investment NSW (Fisheries)

Department of Environment Climate Change and Water

This project is supported by all the NSW Coastal Catchment Management Authorities through funding from the Australian Government's Caring For Our Country and the NSW State Government. The closing date for the survey is Wednesday 16<sup>th</sup> February 2011.

<http://www.surveymonkey.com/s/MTTKMDC>



### **Reminder to all Clarence Landcare Inc. Groups and Landcare Link Members**

**Please fill out the Web Template form we have sent out to you. We are building a new website and would like to feature our groups and members.**

**We would also like the media release form filled out too. Thankyou to those of you who have.**

**Please contact us if you need more forms**



## **Landcarers invited to shine at Landcare awards (Nominations close February 21st)**

Role model farmers and the environmental volunteer community are being invited to step forward and be recognised for their contribution, and to inspire and motivate others when nominations for the Northern Rivers Awards open this week.

Held every two years, the Northern Rivers Landcare Awards recognise the achievements of the dedicated people who have committed their own time to care for our environment and contribute to sustainable production. Nominations for the Northern Rivers Landcare Awards will be opening in early January and close on Monday **21st February, 2011** and individuals or groups can nominate themselves or others for the awards.

Winners will be announced at the 2011 Northern Rivers Landcare Awards Presentation and Celebration event to be held in Grafton, on **Friday the 1st of April 2011**. The 2011 winners of the Landcare awards in the region will be nominated for the 2011 New South Wales Landcare Awards (where categories align with State awards) and if successful they will represent New South Wales at the national awards.

- |  |   |
|--|---|
| • Individual Landcarer Award                     | • Urban Landcare Award                        |
| • Innovation in Sustainable Farm Practices Award | • Indigenous Award                            |
| • Local Landcare Facilitator/Coordinator Award   | • Young Landcare Leader Award                 |
| • Coastcare Award                                | • Local Government Landcare Partnership Award |
| • Landcare Primary Producer Award                | • Northern Rivers Soil Carbon Award           |
| • Community Group Award                          | • Northern Rivers Community Education Award   |
| • Schools Education Award                        |   |

Please note that all except the; Northern Rivers Soil Carbon Award and the Northern Rivers Community Education Award, align with the National and New South Wales Landcare Awards

Those interested in nominating are asked to go to your local Landcare web pages or the Northern Rivers Catchment Management Authority web page in early January for information about the awards and for nomination forms. The Northern Rivers 2011 Landcare Awards are supported by the Landcare groups of the North Coast Regional Landcare Network and the Northern Rivers Catchment Management Authority.

For more information, please contact: NCRLN Regional Landcare Facilitator (coastal) Jodie Gager, Email: [r1f\\_NCRLandcare@hotmail.com](mailto:r1f_NCRLandcare@hotmail.com), New England North West Landcare Regional Landcare Facilitator (tablelands & slopes), Jennie Coldham, Email: [jennie@gbic.org.au](mailto:jennie@gbic.org.au) or phone your local Landcare officer, contact numbers available on local Landcare and Northern Rivers CMA web sites.



# Brooms Head Coastal Environment Day Wednesday 29th September 2010



## Highlights

- around 50 people attended the information display and the guided coastal walk around the headland
- Staff from CVC, NRCMA, DECC and Clarence Landcare were on hand to answer questions.
- coastal walk participants enjoyed the free sausage sizzle and the walk!
- the weather was perfect and we spotted whales just off the coast
- The wildflowers were in spectacular full bloom.

By Julie  
Mousley

**A Clarence Valley Council  
and Clarence Landcare  
initiative  
supported by the  
Northern Rivers CMA  
and the  
Australian Government's  
Caring for Our Country  
Program**



## **NSW Coastal Volunteers Forum The Builders Club, Wollongong, February 27 March 1, 2011**

WyCare is pleased to announce that it will be hosting the NSW 2011 Coastal Volunteers Forum at The Builders Club, Wollongong, from February 27 to March 1, 2011.

In caring for our coast, there is always a lot to teach and even more to learn. The 2011 Coastal Volunteers Forum is an opportunity for NSW coastal and marine volunteers and landholders from all corners of the NSW coast and beyond to come together and showcase their achievements and skills.

Thanks to the support of the Australian Government's Caring for our Country Programme through the Hunter Rivers CMA, the NSW 2011 Coastal Volunteers Forum will provide an opportunity for people to:

- ☐ exchange ideas about cooperative community approaches to creating healthy coastal landscapes and lifestyles and consider future issues;
- ☐ build on the contributions made in previous NSW Dunecare Conferences;
- ☐ swap stories of triumphs and tribulations;
- ☐ showcase their projects in the exhibition area;
- ☐ make new friendships over a bite to eat and
- ☐ share a laugh during the celebratory dinner.

The 2011 Coastal Volunteers Forum will feature a number of outstanding speakers, several concurrent sessions, workshops, panel discussions, field trips and poster presentations.

The event is sponsored by the Australian Government's Caring for our Country Programme and Wollongong City Council and supported by the five coastal Catchment Management Authorities. Further information, programs and registration forms are available from WyCare, 175 Pollock Ave, Wyong, 2259, Ph: 4352 1199, email: [wycare@bigpond.com](mailto:wycare@bigpond.com) or visit [www.wycare.com.au](http://www.wycare.com.au) or contact the Community Landcare Support Officer at your local council or Catchment Management Authority.



## Biological Farming

*This project is supported by SoilCare Inc  
and TAFE Wollongbar through funding  
from the Australian Government's Caring  
for our Country.*

**When: 9.00 AM to 4.00 PM every second Monday  
starting 21 February 2010**

**Duration: 9 sessions over 18 weeks**

**Where: TAFE Trenayr Campus**

**Teacher: Alan Coates**

Class members will evaluate soil health and management practices on their respective farms using the Northern Rivers Soil Health Card and their latest soil lab analyses. Class members will develop a soil management plan for their farms using biological farming principles and the Soil Best Management Practice Guides.

### Course Outline

Date	Topic
21/2/11	Course structure, Biological farming principles, Soil balance ,Soil profiles, Composting
7/3/11	Soil physical properties, Texture, Structure, Soil water. Construct compost heap
21/3/11	Soil carbon/Organic matter, Soil biology, Soil foodwebs, Biodiversity, Soil Health Cards, Check compost
4/4/11	Soil nutrition, pH, Soil testing, Plant nutrition, Plant physiology and nutrient uptake, Nutrient balance, Check compost
18/4/11	Interpreting soil test results, Developing nutrition programs, Sources of nutrients
2/5/11	Groundcovers/covercrops, Biological pasture management systems, Check compost
16/5/11	Biological cropping systems, Ecosystem management, Develop soil management plan
30/5/11	Soil degradation & management, Pest, disease & weed management
4/6 or 20/6/11	Soil management plans, Revision, Check compost

Field excursions and practical sessions will be a component of all classes.

Farmers who complete the course and submit the course assessment (a soil management plan for their farm) will be reimbursed the \$225.00 TAFE course fee. Reimbursements are made possible through funding from the Australian Government's CARING FOR OUR COUNTRY program.

If you have questions email: [info@soilcare.org](mailto:info@soilcare.org) or

Phone Bonnie Walker 6628 1788 or 0408 359 429



Toadburst 4

12/11/10 – Yamba

This was the night of the Junior Landcare members!! Check out these groovers...

Their eyes are so good and being closer to the ground, I find junior Landcare members can pounce on cane toads quickly!



We were a bit disorganised and a large storm threatened to throw us into a spin, but we still ended up picking up 190 cane toads in a few hours, all from Carrs drive and the Yamba Sportsground. CIA members were met with words of encouragement (and a little laughter) from the exercise group leaving the sports centre at 10pm!!



Legend Junior  
Landcare Lehmanite

Funniest moment of the night was when Simone bought me 2 toads stuck together (you know what I mean). I said "Oh look. They are in amplexus". Simone said "what does that mean?" It only takes a look and then she said "eeeeewwww" and dropped them into the sack. Simone was even more grossed out when I told her about the cane toad Kath got last season who was in amplexus with a female who had obviously been dead for at least 2 days!! Any minute....

So thank you to the standard crew - Bevan, Rob, Simone, Kath and Judith. We need some more people out so warm up those gumbies CIA vols! We need you!! If my 5 and 7 year old children can do it, come on... do something!

Cheers, Sharon Lehman

Check out other great stories at <http://cvcia.blogspot.com/>



Visit the website.  
[www.cvcia.org.au](http://www.cvcia.org.au)





## Landcare Community Office

### *Contact Details*

Suite 1 (upstairs) Dougherty House

48 Prince St Grafton

Postal Address: PO Box 594, Grafton NSW 2460

Ph: (02) 66 435009 F ax: (02)66 435006

NEW Email: [clarence\\_landcare@bigpond.com](mailto:clarence_landcare@bigpond.com)

Website: [www.clarencelandcare.com.au](http://www.clarencelandcare.com.au)



## Clarence Landcare Inc.

P.O. Box 594, Grafton NSW 2460

POSTAGE

PAID

AUSTRALIA



### **A Message from Committee and Staff.**

**Merry Xmas and a Happy New Year from all of Us at Clarence Landcare.**

**The Office will close on Thursday 23rd Dec and reopen on Mon.10th Jan 2011**

**Do we have your up to date email address?** If you would like to receive information on grants, field days and information sessions between Newsletter issues please send us an email requesting we place you our **Newsletter email list**.

Please let us know how you would prefer to receive the Newsletter—Hard Copy in the mail or email link. Thanks Deb

This newsletter is produced by Clarence Landcare Inc. as part of our Community Support Program which is funded by the Caring for our Country and the Northern Rivers Catchment Management Authority